

DIMENSIONS: THE ROSE AND CROWN

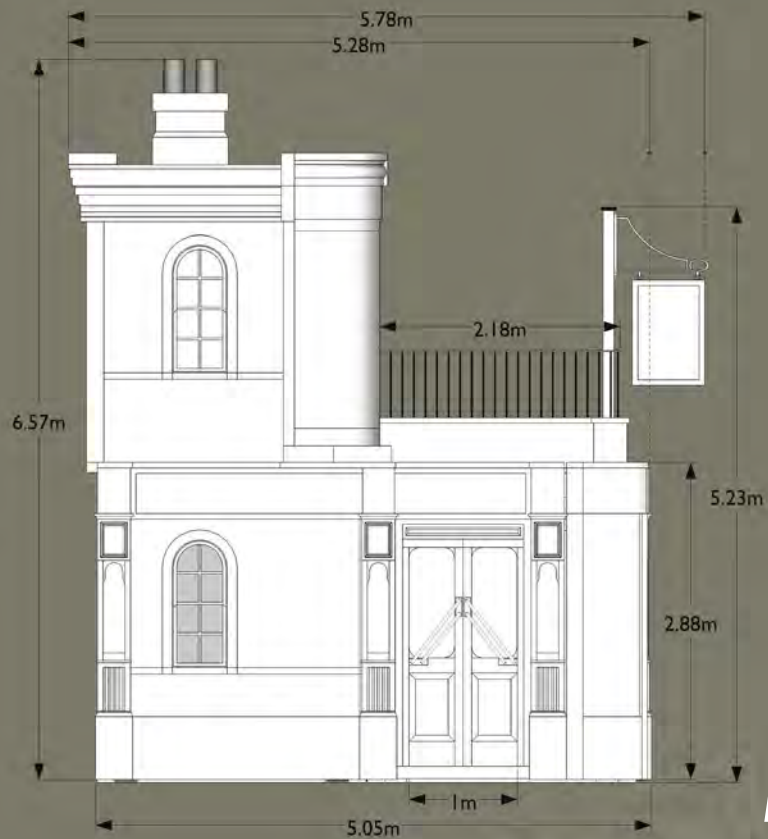


Front Elevation

Container weight information

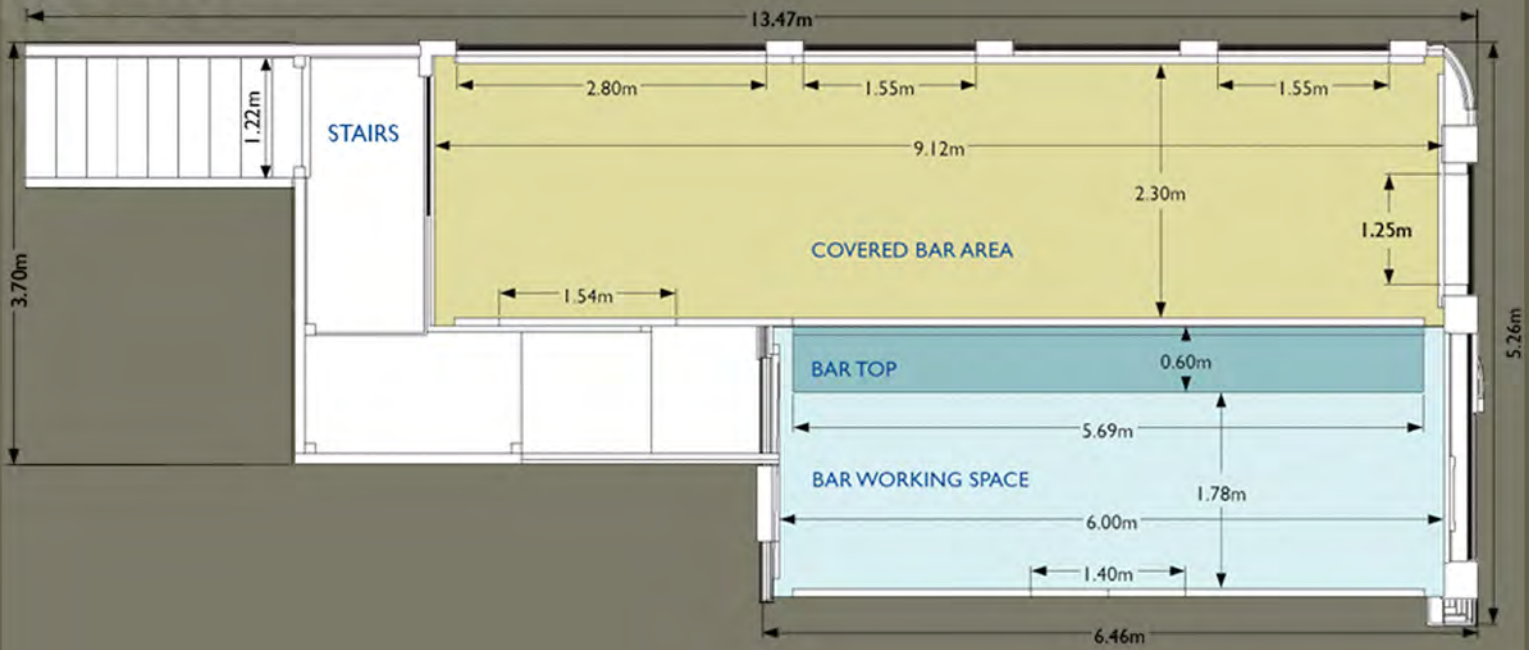
The Rose & Crown consists of three shipping containers with total weights as follows:

- 30ft Ground Floor Container: 7 Tonnes
- 20ft Bar Container: 3 Tonnes
- 20ft First Floor Container: 3 Tonnes

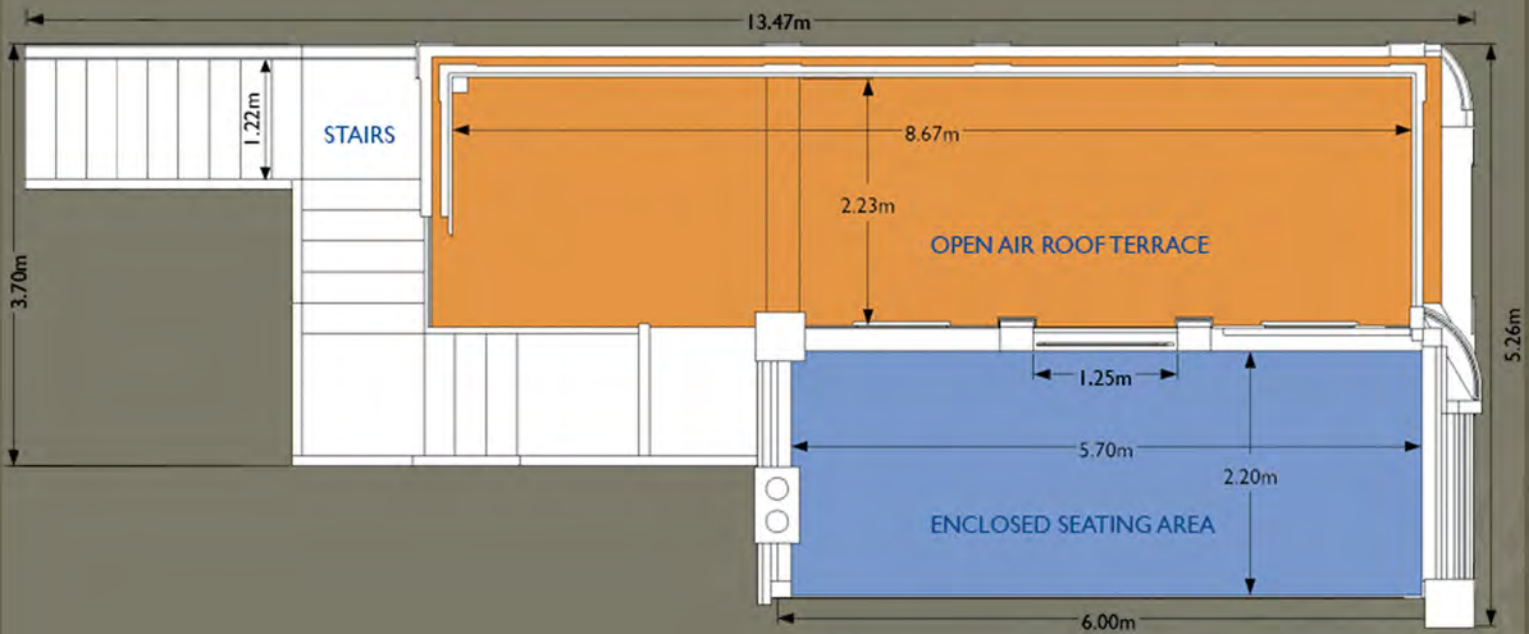


End Elevation

FLOOR PLANS: THE ROSE AND CROWN



Ground Floor Plan



First Floor Plan

CUSTOMISE IT: CUSTOM SIGNAGE DIMENSIONS

The pub is named *The Rose And Crown* as standard, but it can be renamed for any occasion. The following signage locations can be designed and changed to suit any requirement. Additional artwork specifications are available on request.

Gold 3D Letters (Header consists of four panels. Maximum available space for letters is shown below)



Panel A: 384 x 1454mm

Panel B: 384 x 1371mm

Panel C: 384 x 1529mm

Panel D: 384 x 2524mm



Full Colour Curved Sign
(Printable area: 2000mm x 965mm)



Double Sided Hanging Sign
(Printable area: 845mm x 548mm)

We also offer the option to customise any aspect of the pub's appearance. We can supply extras such as a widescreen TV, sound system and floral arrangements. In addition, we can work with your designer, marketing team or print supplier to achieve your desired result.



Above/Above Left: *The Duke of Richmond* Produced for the Goodwood Revival event in West Sussex. In keeping with the mid-20th century theme all signage was hand written.



Left: *The Market Place* produced for StubHub at the Barclaycard BST event in London's Hyde Park. This example followed corporate design guidelines and included a full re-paint using matched Pantone colours. We also produced custom 3D lettering, a full colour printed curved sign and full colour hanging signs.

ABOUT US

Pop-up Pubs are brought to you by Spacial Installations. We have many years of experience in supplying high quality set design and build to the events industry, including Goodwood Revival, Hyde Park BST, X-Factor and MTV to name a few. You can see more of our work at www.spacial-installations.co.uk



Three storey bar and venue entrance built from nine shipping containers at Hyde Park British Summer Time Festival.

ENQUIRIES

For all enquiries, please contact us by telephone on 01993 832155, or by email at: enquiries@pop-up-pubs.com
www.pop-up-pubs.com :: www.spacial-installations.co.uk



SPACIAL
INSTALLATIONS LTD.

©2014-2020 Spacial Installations Ltd. All Rights Reserved.